



How to Run a Higher Education Commission

Dr. Noel B. Saliu

Director, Quality Assurance

National Universities Commission

Abuja, Nigeria

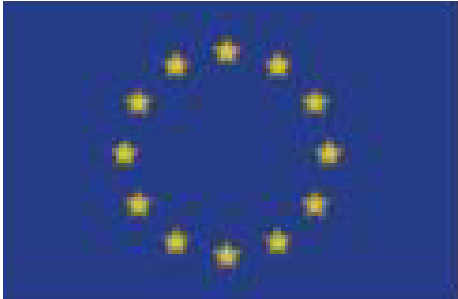


HAQAA Training Course/Exchange Meeting 'Developing a Common Understanding on QA in Africa' Presence Phase 1

30 November, 2016



Appreciation

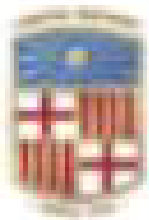


**THE AFRICA-EU
PARTNERSHIP**

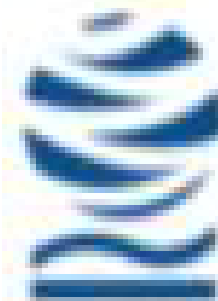


DAAD

Deutscher Akademischer Austauschdienst
German Academic Exchange Service



UNIVERSITAT DE
BARCELONA



EUA

European University Association



ENQA

EUROPEAN ASSOCIATION
FOR QUALITY ASSURANCE
IN HIGHER EDUCATION



Participants at the
HAQAA Training Course

on

Developing a Common Understanding on QA
in Africa

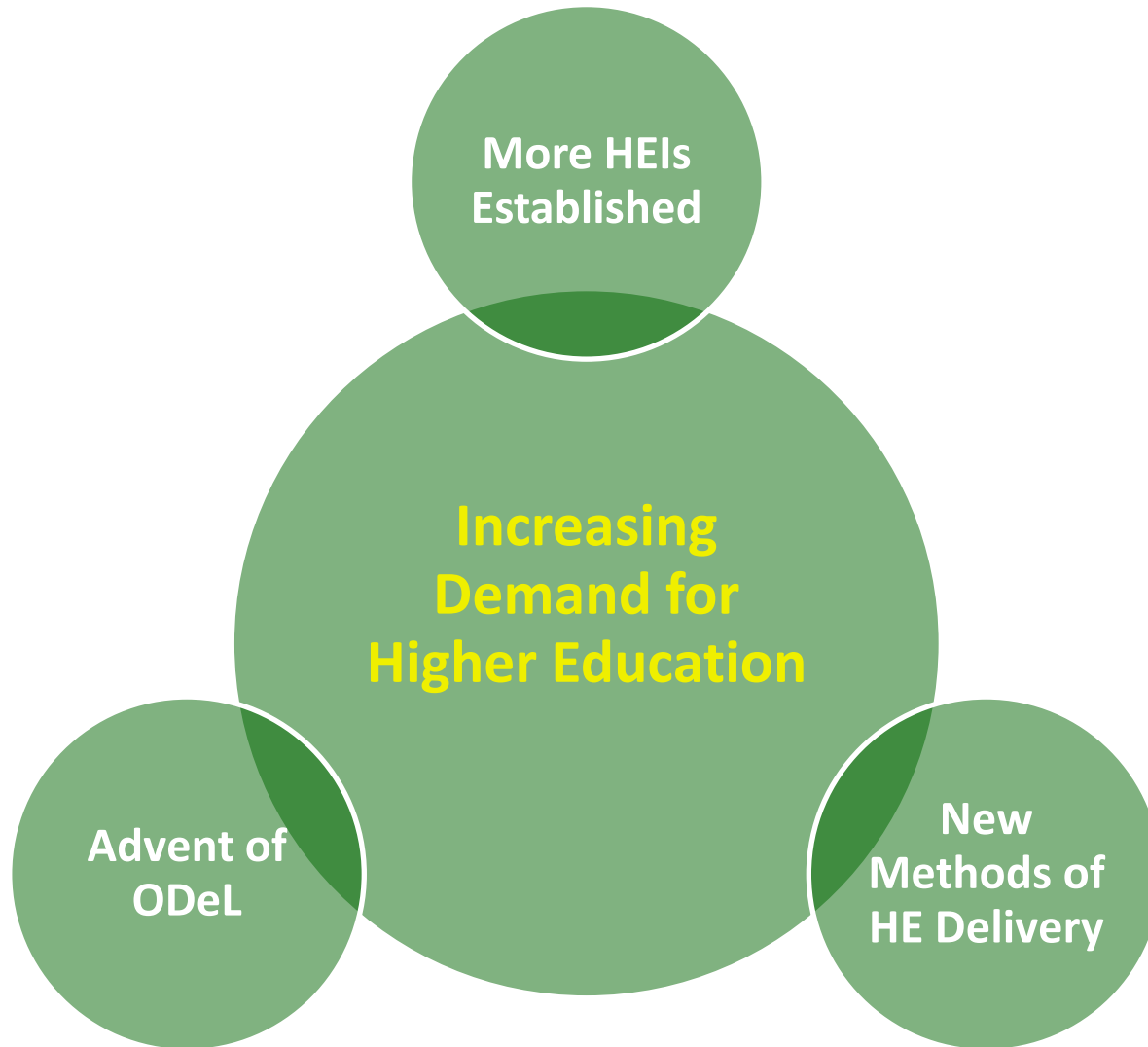


Progress chart..



- **Q.A and HE Commission**
- The Picture in Africa
- Establishing a HE Commission
- Running a HE Commission
- Challenges
- Conclusion

The Present Scenerio



Therefore.....

- ❖ New challenges of HE are also emerging
- ❖ In addition to having credible control systems in the HEIs, there is also the need to have external regulatory systems that will complement the internal controls.
- ❖ Therefore the need to establish HE Commission.

Progress chart..



- Q.A and HE Commission
- **The Picture in Africa**
- Establishing a HE Commission
- Running a HE Commission
- Challenges
- Conclusion

- ❑ Regulation of HE in Africa is in different shades across the Continent:
 - Ministries of Education
 - Ministries of Higher Education/HE Commission
 - Commission for Specialized HE
 - Regional bodies for Regulation

- ❑ The number of QA agencies for HE education was abysmally low about 2 decades ago

- ❑ The picture is changing now with more QA agencies being established by different African countries

- ❑ The present picture indicates that there is still room for improvement

Progress chart..

- Q.A and HE Commission
- The Picture in Africa
- **Establishing a HE Commission**
- Running a HE Commission
- Challenges
- Conclusion



- ✓ Before you can run, you must be existing
- ✓ To Exist, there must be a legal framework that will give strength or backing to the operations of the Commission.
- ✓ Its functions must also be derived from its legal framework
- ✓ The organizational structure must be determined for effective operation
- ✓ Its operational base must be established.
- ✓ Appropriate staffing must be put in place
- ✓ Training and retraining of staff to build their capacity in HE QA
- ✓ Tools for operation is also critical

National Universities Commission



NUC...Established in 1962

Became a Statutory Organisation in 1974

Overall mandate is to ensure the orderly development of university education in Nigeria

At Establishment of

NUC Universities - 5

Statutory body - 6 Universities

By 1975 - 13 Universities



Legal Framework

The Establishment of the Commission is enshrined in the Constitution of the Federal Republic of Nigeria

Legal Framework

NUC Act CAP N81 Law of the Federation of Nigeria and Education
(National Minimum Standard and Establishment of Institution)
Act CAP E3 Law of the Federation of Nigeria 2004



Empowered the NUC to lay down MAS for universities in the Federation
and to accredit their degrees and other academic awards.

Vision

“to be a dynamic regulatory agency acting as a catalyst for positive change and innovation for the delivery of quality university education in Nigeria”

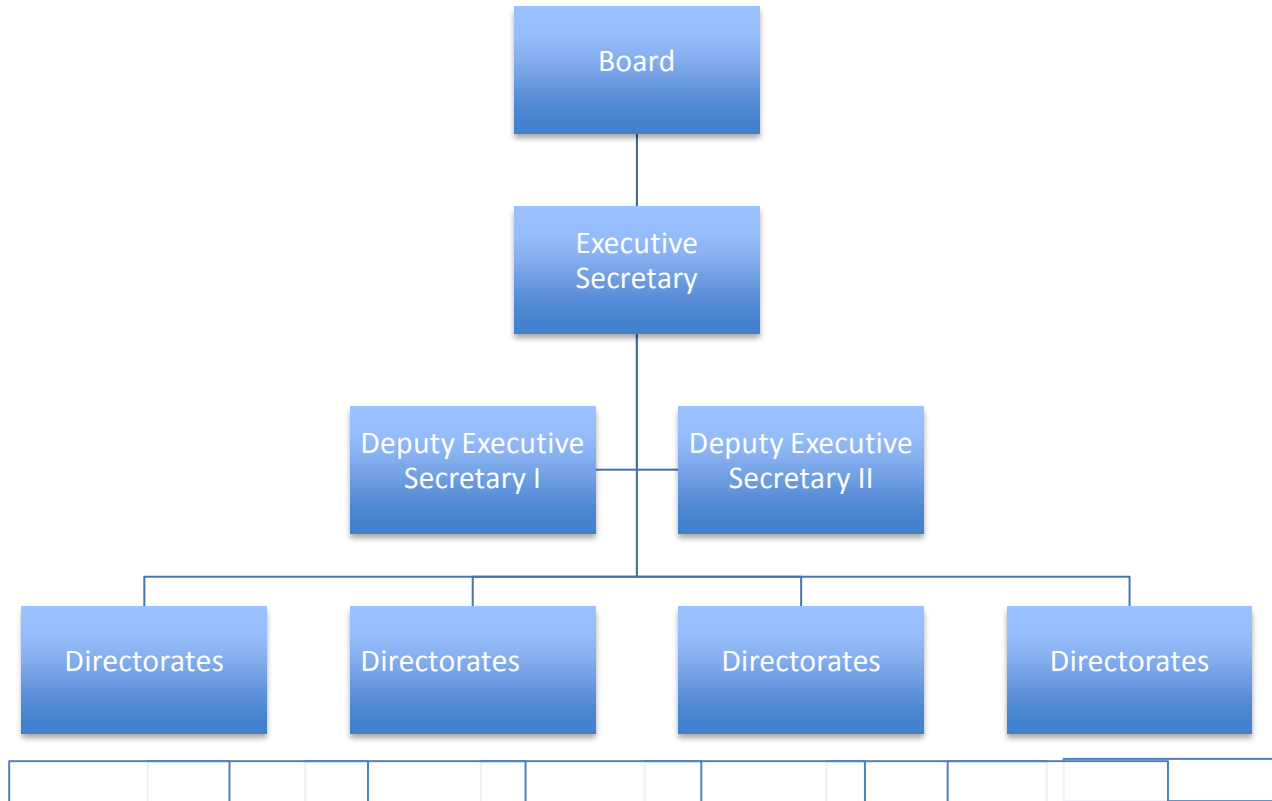
Mission

“to ensure the orderly development of a well- coordinated and productive university system that will guarantee quality and relevant education for national development and global competitiveness”

Mandate

- ✧ Approval of courses and programmes;
- ✧ Determination and maintenance of Minimum Academic Standards;
- ✧ Monitoring of Universities;
- ✧ Accreditation; and
- ✧ Provision of guidelines and processing of applications for the establishment of private universities.

Structure



Funding by the Federal Government



Autonomous in operation

Progress chart..

- Q.A and HE Commission
- The Picture in Africa
- Establishing a HE Commission
- **Running a HE Commission**
- Challenges
- Conclusion



Operation

Internal

External

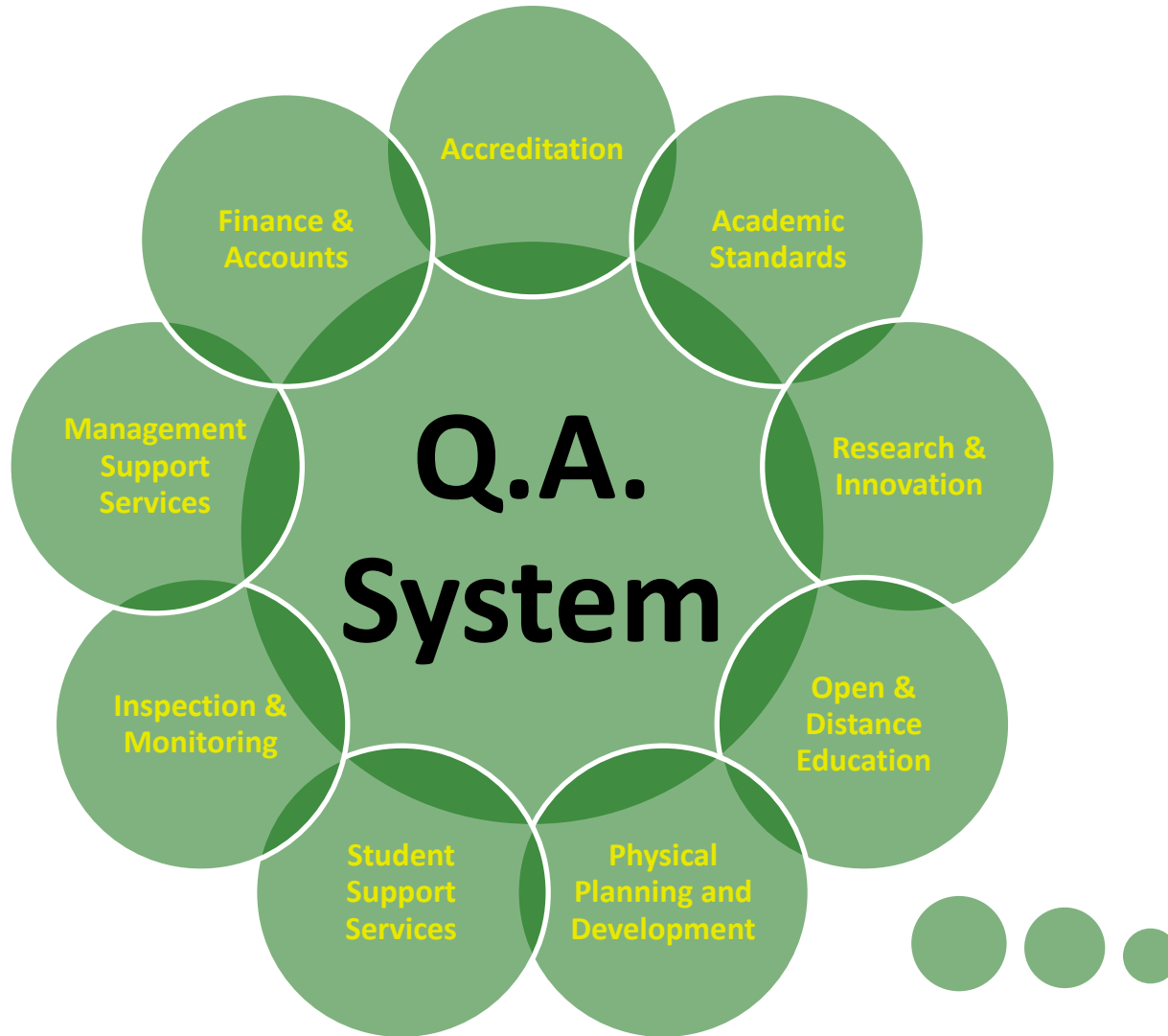


Internal

- Human Resource
 - ❖ Appropriate Staff
 - ❖ Capacity Building

- Facilities and tools of operation
 - ❖ Infrastructure
 - ❖ Materials
 - ❖ Internet facility
 - ❖ Reference Library

External



Running a HE Commission

Establishment
of Programmes

Establishment
of Universities

Accreditation

Inspection and
Monitoring

Research and
Innovation

Effective Space
Utilisation

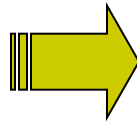
Open &
Distance
Education

Input-Process-Output Theoretical Model for the University System

ELEMENTS OF THE UNIVERSITY SYSTEM

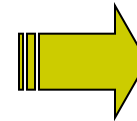
INPUT

- Students
- Teachers
- Non-teaching staff
- Managers
- Facilities
- Finance
- Instructional materials
- Other resources



PROCESS

- Teaching and learning processes
- Research
- Use of time & space
- Student services
- Administration
- Leadership
- Community participation
- Q.A
- Management



OUTPUT

- Skilled and employable graduates
- Responsible citizens
- Economic and social development
- Production of new knowledge



Equity, Efficiency, Effectiveness, Relevance, Quality



www.shutterstock.com - 31370068

Interaction



Thank you

nbsaliu@nuc.edu.ng

remibiodun2000@yahoo.com

www.nuc.edu.ng